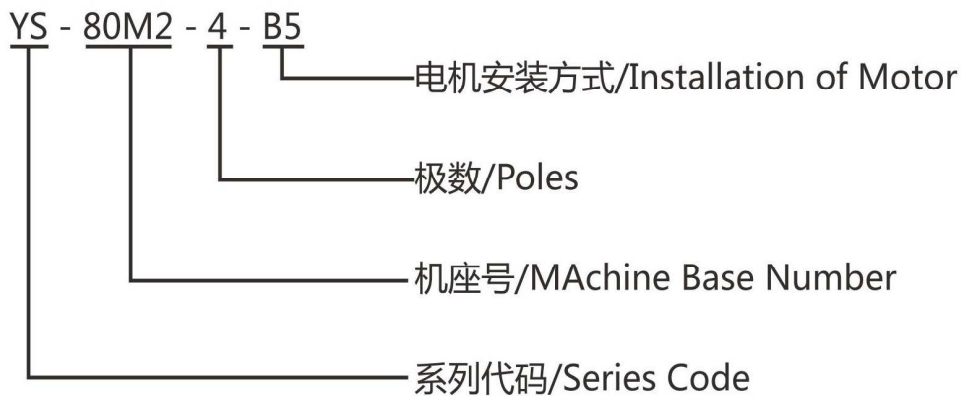


一、主要产品

- 1、YY、YC、YL、YS系列单、三交流异步电动机
- 2、YEJ系列三相、直流制动异步电动机

二、三相异步电动机型号举例说明



三、三相异步电动机转速参数

电机极数	2 P	4 P	6 P	8 P
同步转速	3000转	1500转	1000转	750转

一、YS系列三相异步电动机技术参数

1. YS series Three-phase asynchronous motor parameters

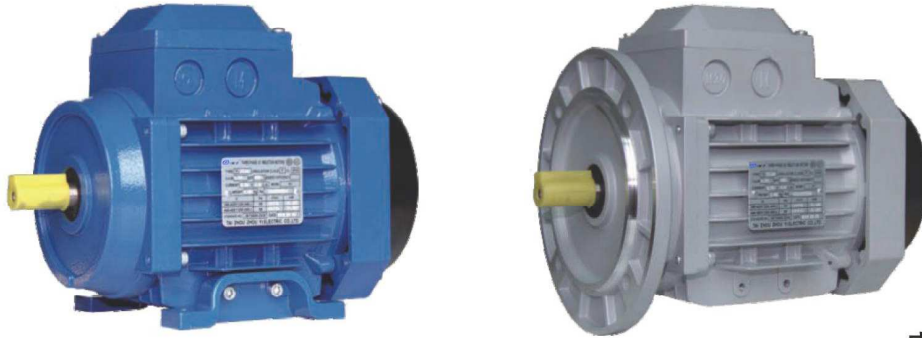


表1/Table 1

型号	额定功率 (Kw)	额定电流 (A)	额定效率 (η %)	额定功率因数 ($\cos\Phi$)	堵转电流 额定电流	堵转转矩 额定转矩	最大转矩 额定转矩
Type	Rated Power	Rated Current	Rated Efficiency	Rated Power Factor	Locked Rotor Rated Current	Locked Torque Rated Torque	Max Torque Rated Torque
YS-63M1-2	0.18	0.53	69	0.75	6	2.3	2.3
YS-63M2-2	0.25	0.68	72	0.78	6	2.3	2.3
YS-71M1-2	0.37	0.96	73.5	0.8	6	2.3	2.3
YS-71M2-2	0.55	1.35	75.5	0.82	6	2.3	2.3
YS-80M1-2	0.75	1.75	76.5	0.85	6	2.2	2.3
YS-80M2-2	1.1	2.55	77	0.85	7	2.2	2.3
YE2-90S-2	1.5	3.32	81.3	0.84	7.6	2.2	2.3
YE2-90L-2	2.2	4.72	83.2	0.85	7.6	2.2	2.3
YE2-100L-2	3	6.17	84.6	0.87	7.8	2.2	2.3
YE2-112M-2	4	8.04	85.8	0.88	8.3	2.2	2.3
YE2-132S1-2	5.5	11.2	87	0.86	8.3	2	2.3
YE2-132S2-2	7.5	14.6	88.1	0.88	7.9	2	2.3
YE2-160M1-2	11	21	89.4	0.89	8.1	2	2.3
YE2-160M2-2	15	28.4	90.3	0.89	8.1	2	2.3
YE2-160L-2	18.5	34.7	90.9	0.89	8.2	2	2.3
YE2-180M-2	22	41.6	91.3	0.88	8.2	2	2.3

表2/Table 2

型号	额定功率 (Kw)	额定电流 (A)	额定效率 (η %)	额定功率因数 ($\cos\Phi$)	堵转电流 额定电流	堵转转矩 额定转矩	最大转矩 额定转矩
Type	Rated Power	Rated Current	Rated Efficiency	Rated Power Factor	Locked Rotor Rated Current	Locked Torque Rated Torque	Max Torque Rated Torque
YS-63M1-4	0.12	0.43	57	0.72	6	2	2.2
YS-63M2-4	0.18	0.61	60	0.73	6	2	2.2
YS-71M1-4	0.25	0.76	65	0.74	6	2	2.2
YS-71M2-4	0.37	1.07	67	0.75	6	2	2.2
YS-80M1-4	0.55	1.54	71	0.75	6	2.4	2.3
YS-80M2-4	0.75	1.99	73	0.77	6.5	2.4	2.3
YE2-90S-4	1.1	2.8	75	0.79	6.5	2.3	2.3
YE2-90L-4	1.5	3.65	78	0.79	6.5	2.3	2.3
YE2-100L1-4	2.2	5.05	80	0.81	7	2.3	2.3
YE2-100L2-4	3	6.64	82	0.82	7	2.3	2.3
YE2-112M-4	4	8.68	84	0.82	7	2.3	2.3
YE2-132S-4	5.5	11.5	85	0.84	7	2.3	2.3
YE2-132M-4	7.5	15.3	87	0.84	7	2.3	2.3
YE2-160M-4	11	22.2	88	0.85	7	2.2	2.3
YE2-160L-4	15	29.8	89	0.85	7.5	2.2	2.3
YE2-180M-4	18.5	36.1	90.7	0.85	7.5	2.2	2.3
YE2-180L-4	22	42.6	91.2	0.85	7.5	2.2	2.3
YE2-200L-4	30	57.5	92	0.86	7.2	2.2	2.3
YE2-225S-4	37	69.6	92.5	0.87	7.2	2.2	2.3
YE2-225M-4	45	84	93	0.87	7.2	2.2	2.3
YE2-250M-4	55	102.9	93.2	0.87	7.2	2.2	2.3
YE2-280S-4	75	138	94	0.87	7.2	2.2	2.3
YE2-280M-4	90	165.6	94.2	0.87	7.2	2.2	2.3
YE2-315S-4	110	200.2	94.5	0.88	6.9	2.1	2.2
YE2-315M-4	132	239.1	94.8	0.88	6.9	2.1	2.2
YE2-315L1-4	160	288	94.9	0.89	6.9	2.1	2.2
YE2-315L2-4	200	358.9	95.2	0.89	6.9	2.1	2.2

客户如有其他要求，可按订单制作。

If the client has other requirement, the manufacture can be done according to the order.

表3/Table 3

型号	额定功率 (Kw)	额定电流 (A)	额定效率 (η %)	额定功率因数 ($\cos\phi$)	堵转电流 额定电流	堵转转矩 额定转矩	最大转矩 额定转矩
Type	Rated Power	Rated Current	Rated Efficiency	Rated Power Factor	Locked Rotor Rated Current	Locked Torque Rated Torque	Max Torque Rated Torque
YS-71M1-6	0.18	0.71	58	0.66	3.3	1.9	2
YS-71M2-6	0.25	0.92	59	0.68	4.6	1.9	2
YS-80M1-6	0.37	1.27	62	0.7	4.8	1.9	2
YS-80M2-6	0.55	1.74	65	0.72	5.1	1.9	2.1
YE2-90S-6	0.75	2.23	70	0.72	5.6	2.1	2.1
YE2-90L-6	1.1	3.1	73	0.73	5.7	2.1	2.1
YE2-100L-6	1.5	3.89	76	0.76	6.1	2.2	2.1
YE2-112M-6	2.2	5.46	79	0.76	6.3	2.2	2.1
YE2-132S-6	3	7.1	81	0.76	6.5	2.2	2.1
YE2-132M1-6	4	9.3	83	0.76	6.7	2.2	2.1
YE2-132M2-6	5.5	12.3	84	0.77	7	2.2	2.1
YE2-160M-6	7.5	16.7	86	0.78	6.6	1.8	2.1
YE2-160L-6	11	23.6	87	0.79	6.7	1.9	2.1
YE2-180L-6	15	30.7	89	0.81	7.1	2.1	2.1
YE2-200L1-6	18.5	37.7	90	0.82	7.2	2.1	2.1
YE2-200L2-6	22	44.1	90.5	0.83	7.5	2.1	2.1
YE2-225M-6	30	58.4	91.5	0.85	7.1	2.1	2.1
YE2-250M-6	37	70.4	92	0.86	7.2	2.1	2.1
YE2-280S-6	45	85.4	92.5	0.86	7.2	2.1	2
YE2-280M-6	55	103.3	92.8	0.86	7.3	2.1	2
YE2-315S-6	75	140.2	93.5	0.86	7.4	2	2
YE2-315M-6	90	167	93.6	0.86	7.4	2	2
YE2-315L1-6	110	202.3	94	0.86	6.8	2	2
YE2-315L2-6	132	242.3	94.2	0.87	6.8	2	2

客户如有其他要求，可按订单制作。 160机座以上外壳铸铁

If the client has other requirement , the manufacture can be done according to the order.

More than 160 shell of cast iron machine base.

表4/Table 4

型号	额定功率 (Kw)	额定电流 (A)	额定效率 ($\eta\%$)	额定功率因数 ($\cos\phi$)	堵转电流 额定电流	堵转转矩 额定转矩	最大转矩 额定转矩
Type	Rated Power	Rated Current	Rated Efficiency	Rated Power Factor	Locked Rotor Rated Current	Locked Torque Rated Torque	Max Torque Rated Torque
YS-80M1-8	0.18	0.86	51.1	0.61	3.3	1.7	1.9
YS-80M2-8	0.25	1.14	54	0.61	3.6	1.7	1.9
YE2-90S-8	0.37	1.47	63	0.61	4.4	1.7	1.9
YE2-90L-8	0.55	2.1	64	0.62	4.7	1.7	2
YE2-100L1-8	0.75	2.34	70	0.67	5	1.8	2
YE2-100L2-8	1.1	3.22	72	0.68	5.3	1.8	2
YE2-112M-8	1.5	4.41	75	0.68	5.5	1.8	2
YE2-132S-8	2.2	6	78	0.71	5.8	1.8	2
YE2-132M-8	3	7.6	79	0.73	5.9	1.8	2
YE2-160M1-8	4	10	81	0.73	6.2	1.9	2
YE2-160M2-8	5	13.3	83	0.74	6.5	1.9	2
YE2-160L-8	7.5	17.8	85	0.75	6.3	1.9	2
YE2-180L-8	11	24.9	87	0.76	6.6	1.9	2
YE2-200L-8	15	33.3	88	0.76	6.7	1.9	2
YE2-225S-8	18.5	40.1	90	0.77	6.8	1.9	2
YE2-225M-8	22	46.8	90.5	0.78	7	1.9	2
YE2-250M-8	30	63	90	0.79	6.6	1.9	2
YE2-280S-8	37	76.2	91	0.8	6.7	1.9	2
YE2-280M-8	45	92.5	92	0.8	6.9	1.9	2
YE2-315S-8	55	110.4	92.8	0.81	6.9	1.8	2
YE2-315M-8	75	148.1	93	0.81	7	1.8	2
YE2-315L1-8	90	177.6	93.8	0.82	7.1	1.8	2
YE2-315L2-8	110	215.8	94	0.82	6.4	1.8	2

客户如有其他要求，可按订单制作。 160机座以上外壳铸铁

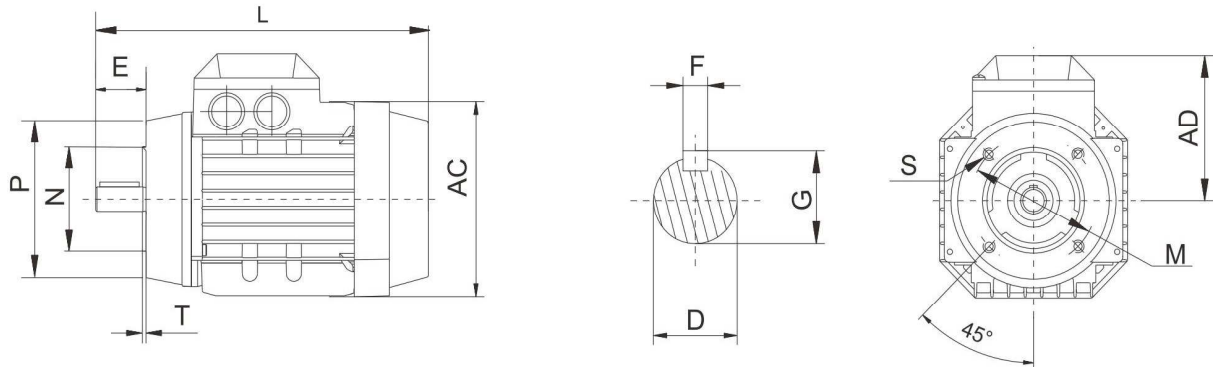
If the client has other requirement, the manufacture can be done according to the order.

More than 160 shell of cast iron machine base.

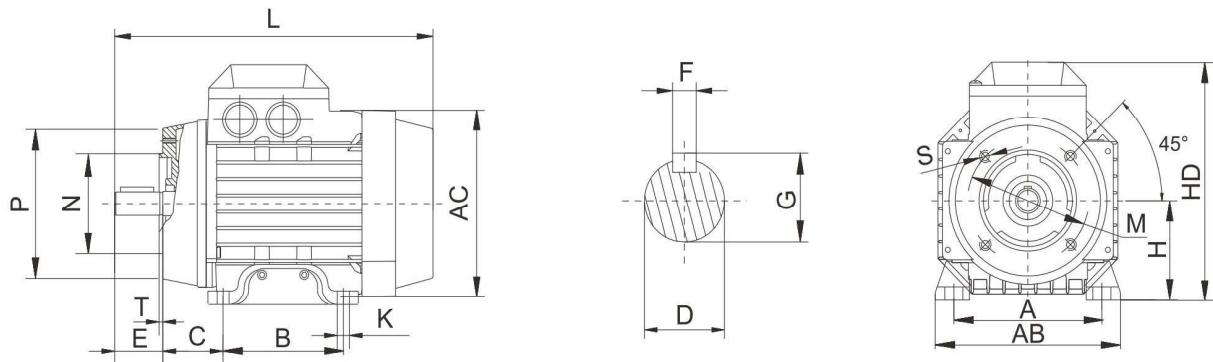
二、YS系列三相异步电动机外型及安装尺寸

2. YS series Three-phase asynchronous motor appearance and installation dimensions

B14



B34



机座号	外型及安装尺寸 Installation Dimensions																		
Machine Base No.	A	B	C	D	E	F	G	H	K	M	N	P	S	T	AB	AC	HD	HF	L
63M	100	80	40	ø11	23	4	8.5	63	ø7	75/115	60/95	90/140	M5/ø10	2.5	115	120X120	171	178	205
71M	112	90	45	ø14	30	5	11	71	ø7	85/130	70/110	105/160	M6/ø10	3.5	136	130X130	176	185	238
80M	125	100	50	ø19	40	6	15.5	80	ø10	100/165	80/130	120/200	M6/ø12	3.5	154	145X145	190	210	265
90S	140	100	56	ø24	50	8	20	90	ø10	115/165	95/130	140/200	M8/ø12	3.5	180	177X177	216	206	280
90L	140	125	56	ø24	50	8	20	90	ø10	115/165	95/130	140/200	M8/ø12	3.5	180	177X177	216	206	280
100L	160	140	63	ø28	60	8	24	100	ø12	130/215	110/180	160/250	M8/ø15	4	205	197X197	236	261	348
112M	190	140	70	ø28	60	8	24	112	ø12	130/215	110/180	160/250	M8/ø15	4	222	221X221	258	270	361
132S	216	140	89	ø38	80	10	33	132	ø12	265	230	300	15	4	280	263X263	296	313	482
132M	216	178	89	ø38	80	10	33	132	ø12	265	230	300	15	4	280	263X263	296	313	512

此外型图及安装尺寸用于铝机筒电机。

表中有“/”符号的，表示分子为B14安装尺寸，分母为B5安装尺寸。

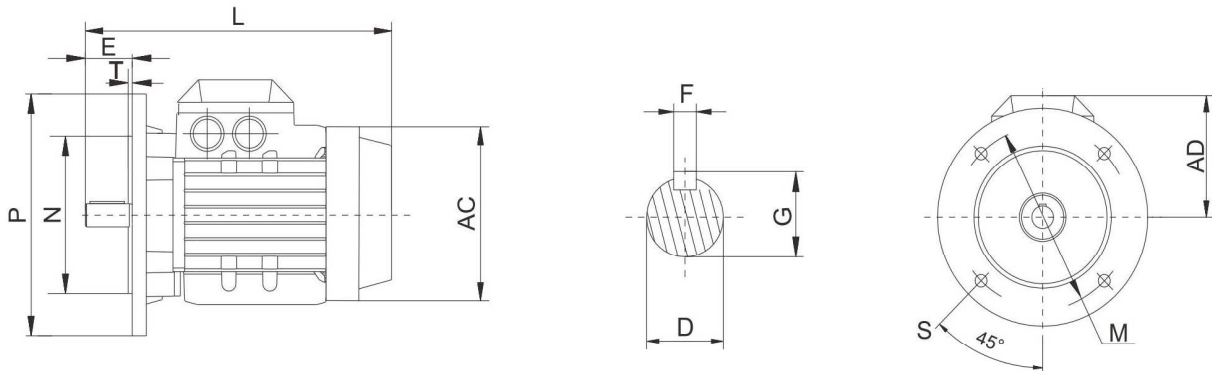
Such overall and installation dimensions apply to the motor with aluminum cylinder.

The table with “/” symbol, molecular size for the B14 installation, the denominator for B5 mounting dimensions.

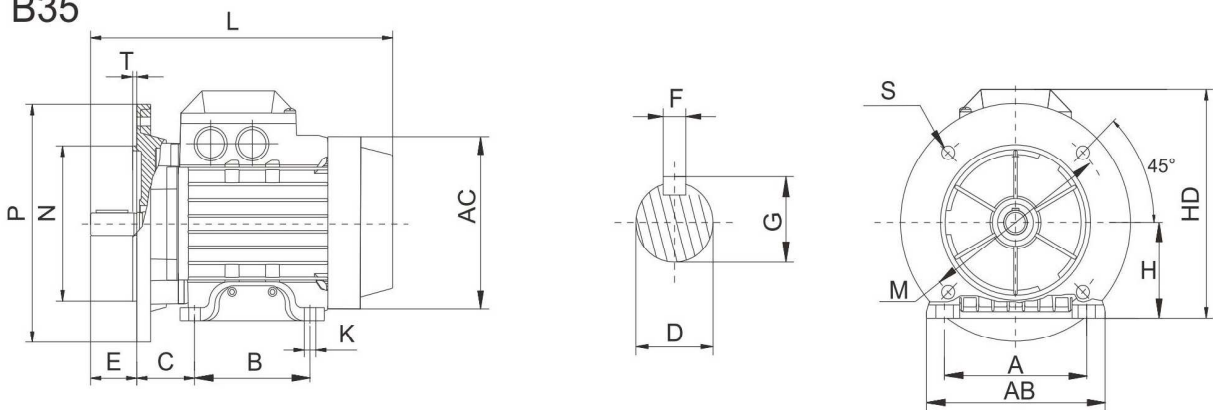
YS铸铝系列
Series YS die casting Aluminum

外型及安转尺寸
Installation Dimensions

B5



B35



机座号	外型及安转尺寸 Installation Dimensions																		
Machine Base No.	A	B	C	D	E	F	G	H	K	M	N	P	S	T	AB	AC	HD	HF	L
63M	100	80	40	ø11	23	4	8.5	63	ø7	75/115	60/95	90/140	M5/ø10	2.5	115	120X120	171	178	205
71M	112	90	45	ø14	30	5	11	71	ø7	85/130	70/110	105/160	M6/ø10	3.5	136	130X130	176	185	238
80M	125	100	50	ø19	40	6	15.5	80	ø10	100/165	80/130	120/200	M6/ø12	3.5	154	145X145	190	210	265
90S	140	100	56	ø24	50	8	20	90	ø10	115/165	95/130	140/200	M8/ø12	3.5	180	177X177	216	206	280
90L	140	125	56	ø24	50	8	20	90	ø10	115/165	95/130	140/200	M8/ø12	3.5	180	177X177	216	206	280
100L	160	140	63	ø28	60	8	24	100	ø12	130/215	110/180	160/250	M8/ø15	4	205	197X197	236	261	348
112M	190	140	70	ø28	60	8	24	112	ø12	130/215	110/180	160/250	M8/ø15	4	222	221X221	258	270	361
132S	216	140	89	ø38	80	10	33	132	ø12	265	230	300	15	4	280	263X263	296	313	482
132M	216	178	89	ø38	80	10	33	132	ø12	265	230	300	15	4	280	263X263	296	313	512

此外型图及安转尺寸用于铝机筒电机。

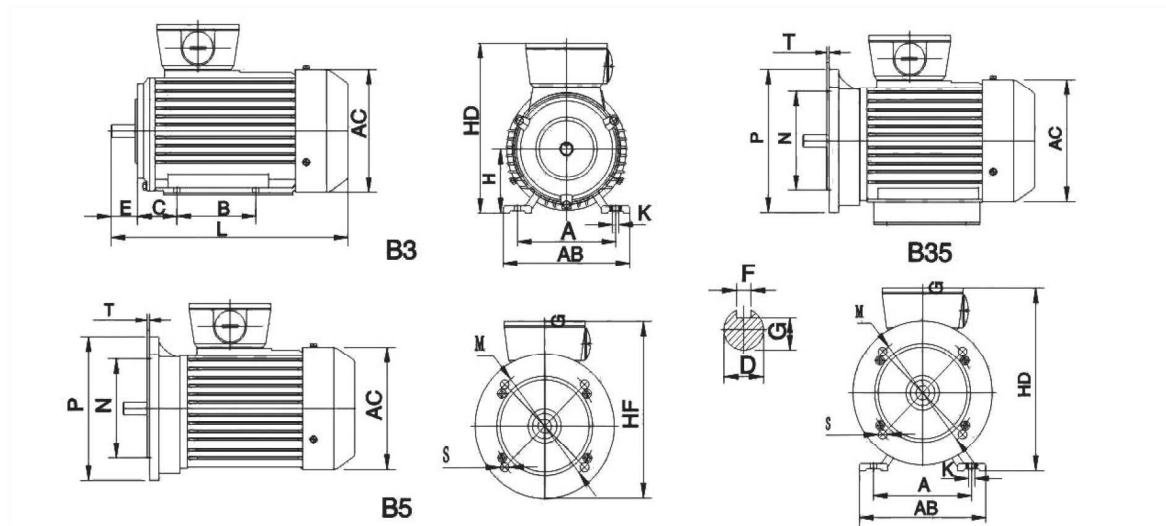
表中有“/”符号的，表示分子为B14安转尺寸，分母为B5安转尺寸。

Such overall and installation dimensions apply to the motor with aluminum cylinder.

The table with "/" symbol ,molecular size for the B14 installation ,the denominator for B5 mounting dimensions.

三、铸铁三相异步电动机外型及安装尺寸

3. Three-phase asynchronous motor appearance and installation dimensions



机座号		外型及安装尺寸 Installation Dimensions																		
Machine Base No.		A	B	C	D	E	F	G	H	K	M	N	P	S	T	AB	AC	HD	HF	L
160M		254	210	108	Ø42	110	12	37	160	Ø15	300	250	350	Ø19	5	320	330	420	385	615
160L		254	254	108	Ø42	110	12	37	160	Ø15	300	250	350	Ø19	5	320	330	420	385	670
180M		279	241	121	Ø48	110	14	42.5	180	Ø15	300	250	350	Ø19	5	355	380	455	430	700
180L		279	279	121	Ø48	110	14	42.5	180	Ø15	300	250	350	Ø19	5	355	380	455	430	740
200L		318	305	133	Ø55	110	16	49	200	Ø19	350	300	400	Ø19	5	395	420	505	480	770
225S	4P、8P	356	286	149	Ø60	140	18	53	225	Ø19	400	350	450	Ø19	5	435	470	560	535	815
225M	2P	356	311	149	Ø55	110	16	49	225	Ø19	400	350	450	Ø19	5	435	470	560	535	820
225M	4P、6P、8P	356	311	149	Ø60	140	18	53	225	Ø19	400	350	450	Ø19	5	435	470	560	535	845
250M	2P	406	349	168	Ø60	140	18	53	250	Ø24	500	450	550	Ø19	5	490	510	615	595	910
250M	4P、6P、8P	406	349	168	Ø65	140	18	58	250	Ø24	500	450	550	Ø19	5	490	510	615	595	910
280S	2P	457	368	190	Ø65	140	18	58	280	Ø24	500	450	550	Ø19	5	550	580	680	650	985
280S	4P、6P、8P	457	368	190	Ø75	140	20	67.5	280	Ø24	500	450	550	Ø19	5	550	580	680	650	985
280M	2P	457	419	190	Ø65	140	18	58	280	Ø24	500	450	550	Ø19	5	550	580	680	650	1035
280M	4P、6P、8P	457	419	190	Ø75	140	20	67.5	280	Ø24	500	450	550	Ø19	5	550	580	680	650	1035
315S	2P	508	406	216	Ø65	140	18	58	315	Ø28	600	550	660	Ø24	6	635	645	845	—	1160
315S	4P、6P、8P	508	406	216	Ø80	170	22	71	315	Ø28	600	550	660	Ø24	6	635	645	845	—	1270
315M	2P	508	457	216	Ø65	140	18	58	315	Ø28	600	550	660	Ø24	6	635	645	845	—	1190
315M	4P、6P、8P	508	457	216	Ø80	170	22	71	315	Ø28	600	550	660	Ø24	6	635	645	845	—	1300
315L	2P	508	508	216	Ø65	140	18	58	315	Ø28	600	550	660	Ø24	6	635	645	845	—	1190
315L	4P、6P、8P	508	508	216	Ø80	170	22	71	315	Ø28	600	550	660	Ø24	6	635	645	845	—	1300

*此外型图及安装尺寸用于铸铁机筒电机

*Such overall and installation dimensions apply to the motor with cast iron cylinder.

四、YL 系列单相电容双值异步电动机220V/50HZ
4. YL series Single-phase dual-capacitor induction asynchronous motor 220V/50HZ



表1/Table 1

型号	额定功率 (KW)	额定电流 (A)	额定效率 ($\eta\%$)	功率因数 (COS ϕ)	堵转电流 (A)	堵转转矩 额定转矩	最大转矩 额定转矩
Type	Rated Power	Rated Current	Rated Efficiency	Rated Power Factor	Locked Rotor	Locked Torque Rated Torque	Max Torque Rated Torque
YL71M1-2	0.37	2.72	67.0	0.92	16	1.8	1.7
YL71M2-2	0.55	3.88	70.0	0.92	21	1.8	1.7
YL80M1-2	0.75	5.15	72.0	0.92	29	1.8	1.7
YL80M2-2	1.1	7.01	75.0	0.95	40	1.8	1.7
YL90S-2	1.5	9.44	76.0	0.95	55	1.7	1.7
YL90L-2	2.2	13.7	77.0	0.95	80	1.7	1.7
YL100L-2	3	18.2	79.0	0.95	110	1.7	1.7
YL71M1-4	0.25	1.99	62.0	0.92	12	1.8	1.7
YL71M2-4	0.37	2.8	65.0	0.92	16	1.8	1.7
YL80M1-4	0.55	4.0	68.0	0.92	21	1.8	1.7
YL80M2-4	0.75	3.94	71.0	0.92	29	1.8	1.7
YL90S-4	1.1	5.22	73.0	0.95	40	1.7	1.7
YL90L-4	1.5	9.57	75.0	0.95	55	1.7	1.7
YL100L1-4	2.2	13.85	76.0	0.95	80	1.7	1.7
YL100L2-4	3.0	18.64	77.0	0.95	110	1.7	1.7

五、单相电容运转异步电动机220V/50HZ

5. Single Phase Capacitor Run Asynchronous Motor 220V/50HZ

表2/Table 2

型 号	额定功率 (Kw)	额定电流 (A)	额定效率 ($\eta\%$)	功率因数 ($\cos\phi$)	堵转电流 (A)	堵转转矩 额定转矩	最大转矩 额定转矩
Type	Rated Power	Rated Current	Rated Efficiency	Rated Power Factor	Locked Rotor	Locked Torque Rated Torque	Max Torque Rated Torque
YY63M1-2	0.18	1.37	65.0	0.92	5.0	0.4	1.7
YY63M22	0.25	1.87	66.0	0.92	7.0	0.4	1.7
YY71M1-2	0.37	0.73	67.0	0.92	10	0.35	1.7
YY71M2-2	0.55	3.88	70.0	0.92	15	0.35	1.7
YY80M1-2	0.75	5.15	72.0	0.92	20	0.33	1.7
YY80M2-2	1.1	7.0	75.0	0.95	30	0.33	1.7
YY90S-2	1.5	9.44	76.0	0.95	45	0.30	1.7
YY90L-2	2.2	13.7	77.0	0.95	65	0.30	1.7
YY63M1-4	0.12	1.04	57.0	0.92	3.5	0.40	1.7
YY63M2-4	0.18	1.5	59.0	0.92	5.0	0.40	1.7
YY71M1-4	0.25	2.0	61.0	0.92	7.0	0.35	1.7
YY71M2-4	0.37	2.95	62.0	0.92	10	0.35	1.7
YY80M1-4	0.55	4.25	64.0	0.92	15	0.35	1.7
YY80M2-4	0.75	5.45	68.0	0.92	20	0.32	1.7
YY90S-4	1.1	7.4	71.0	0.95	30	0.32	1.7
YY90L-4	1.5	9.83	73.0	0.95	45	0.30	1.7

六、单相电容启动异步电动机220V/50Hz

6. Single Phase Capacitor Start Asynchronous Motor 220V/50HZ

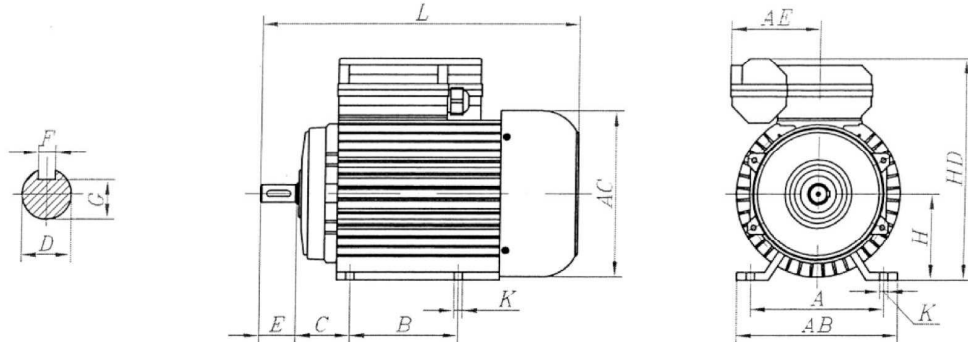
表2/Table 2

型号	额定功率 (Kw)	额定电流 (A)	额定效率 ($\eta\%$)	功率因数 ($\cos\phi$)	堵转电流 (A)	堵转转矩 额定转矩	最大转矩 额定转矩
Type	Rated Power	Rated Current	Rated Efficiency	Rated Power Factor	Locked Rotor	Locked Torque Rated Torque	Max Torque Rated Torque
YC71M1-2	0.18	1.89	60.0	0.72	12	3.0	1.8
YC71M2-2	0.25	2.4	64.0	0.74	15	3.0	1.8
YC80M1-2	0.37	3.36	65.0	0.77	21	2.8	1.8
YC80M2-2	0.55	4.65	68.0	0.79	29	2.8	1.8
YC90S-2	0.42	6.1	70.0	0.80	37	2.5	1.8
YC90L-2	1.1	8.68	72.0	0.80	60	2.5	1.8
YC100L1-2	1.5	11.4	74.0	0.81	80	2.5	1.8
YC100L2-2	2.2	16.5	75.0	0.81	120	2.2	1.8
YC112M-2	3	21.9	76.0	0.82	150	2.2	1.8
YC132S-2	3.7	26.6	77.0	0.82	175	2.2	1.8
YC71M1-4	0.12	1.88	50.0	0.58	9.0	3.0	1.8
YC71M2-4	0.18	2.49	53.0	0.62	12	2.8	1.8
YC80M1-4	0.25	3.11	58.0	0.63	15	2.8	1.8
YC80M2-4	0.37	4.24	62.0	0.64	21	2.5	1.8
YC90S-4	0.55	5.5	66.0	0.69	29	2.5	1.8
YC90L-4	0.75	6.87	68.0	0.73	37	2.5	1.8
YC100L-4	1.1	9.52	71.0	0.74	60	2.5	1.8
YC100L2-4	1.5	12.5	73.0	0.75	80	2.5	1.8
YC112M-4	2.2	17.8	74.0	0.78	120	2.2	1.8
YC132S-4	3	23.6	75.0	0.77	150	2.2	1.8
YC132M-4	4	28.0	76.0	0.79	175	2.2	1.8

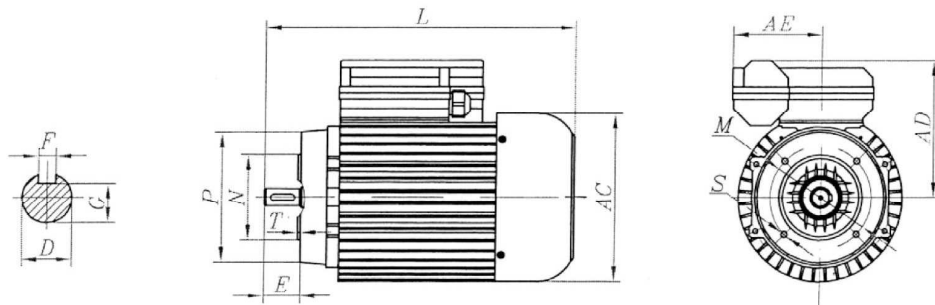
七、YY、YC 系列单相异步电机外型及安装尺寸

7. YY、YC series Single-phase asynchronous motor appearance and installation dimensions

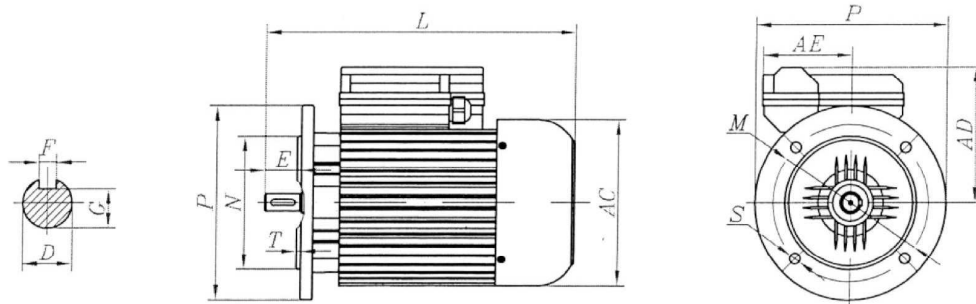
IMB3



IMB14



IMB5



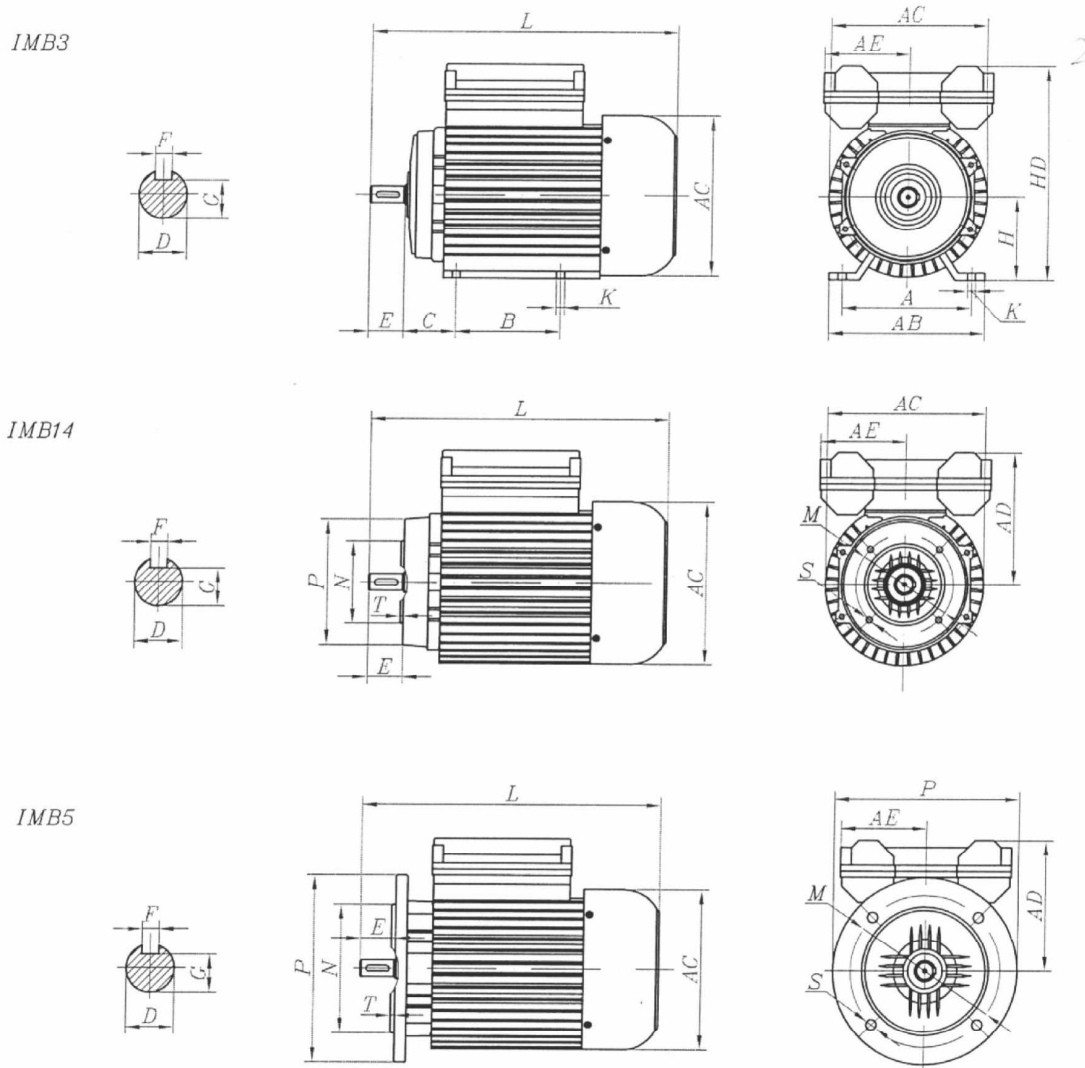
机座尺寸 Frame Size	安装尺寸 Installstion Size(mm) IMB3										安装尺寸 Installation Size(mm) IMB14					安装尺寸 Installation Size(mm) IMB5					外型尺寸 Installation Size(mm)				
	A	B	C	D	E	F	G	H	K	M	N	P	S	T	M	N	P	S	T	AB	AC	AD	AE	HD	L
63	100	80	40	11	23	4	8.5	6	7	75	60	90	M5	2.5	115	95	140	10	3	130	150	100	73	165	230
71	112	90	45	14	30	5	11	7	7	85	70	105	M6	2.5	130	110	160	10	3.5	145	145	125	73	210	255
80	125	100	50	19	40	6	15.5	8	10	100	80	120	M6	3.0	165	130	200	12	3.5	160	165	135	89	240	295
90S	140	100	56	24	50	8	20	9	10	115	95	140	M8	3.0	165	130	200	12	3.5	180	185	145	89	270	335
90L	140	125	56	24	50	8	20	10	10	115	95	140	M8	3.0	165	130	200	15	3.5	180	185	145	89	270	360
100L	160	140	63	28	60	8	24	12	12	130	110	160	M8	3.5	215	180	250	15	4.0	205	215	170		280	380
112M	190	140	70	28	60	10	24	13	13	130	110	160	M8	3.5	215	180	250	15	4.0	245	240	180		310	400

YY、YC、YL系列
Series YY、YC、YL

外型及安转尺寸
Installation Dimensions

八、YL 系列单相异步电机外型及安装尺寸

8. YL series Single-phase asynchronous motor appearance and installation dimensions



机座尺寸 Frame Size	安装尺寸 Installstion Size(mm) IMB3										安装尺寸 Installation Size(mm) IMB14					安装尺寸 Installation Size(mm) IMB5					外型尺寸 Installation Size(mm)					
	A	B	C	D	E	F	G	H	K	M	N	P	S	T	M	N	P	S	T	AB	AC	AD	AE	HD	L	
63	100	80	40	11	23	4	8.5	6	7	75	60	90	M5	2.5	115	95	140	10	3	130	150	100	73	165	230	
71	112	90	45	14	30	5	11	71	7	85	70	105	M6	2.5	130	110	160	10	3.5	145	145	125	73	210	255	
80	125	100	50	19	40	6	15.5	80	10	100	80	120	M6	3.0	165	130	200	12	3.5	160	165	135	89	240	295	
90S	140	100	56	24	50	8	20	90	10	115	95	140	M8	3.0	165	130	200	12	3.5	180	185	145	89	270	335	
90L	140	125	56	24	50	8	20	100	10	115	95	140	M8	3.0	165	130	200	15	3.5	180	185	145	89	270	360	
100L	160	140	63	28	60	8	24	112	12	130	110	160	M8	3.5	215	180	250	15	4.0	205	215	170		280	380	
112M	190	140	70	28	60	10	24	132	13	130	110	160	M8	3.5	215	180	250	15	4.0	245	240	180		310	400	